

Displaying Measures Dynamically

You can use Measure Names and Measure Values to set up a quick filter from which you can select individual measures to display on the fly in a view. This article walks through an example with a time trend chart.

Create a view with a quick filter that lists multiple measures.

Step 1

Open a new workbook and connect to the Superstore sample.

Step 2

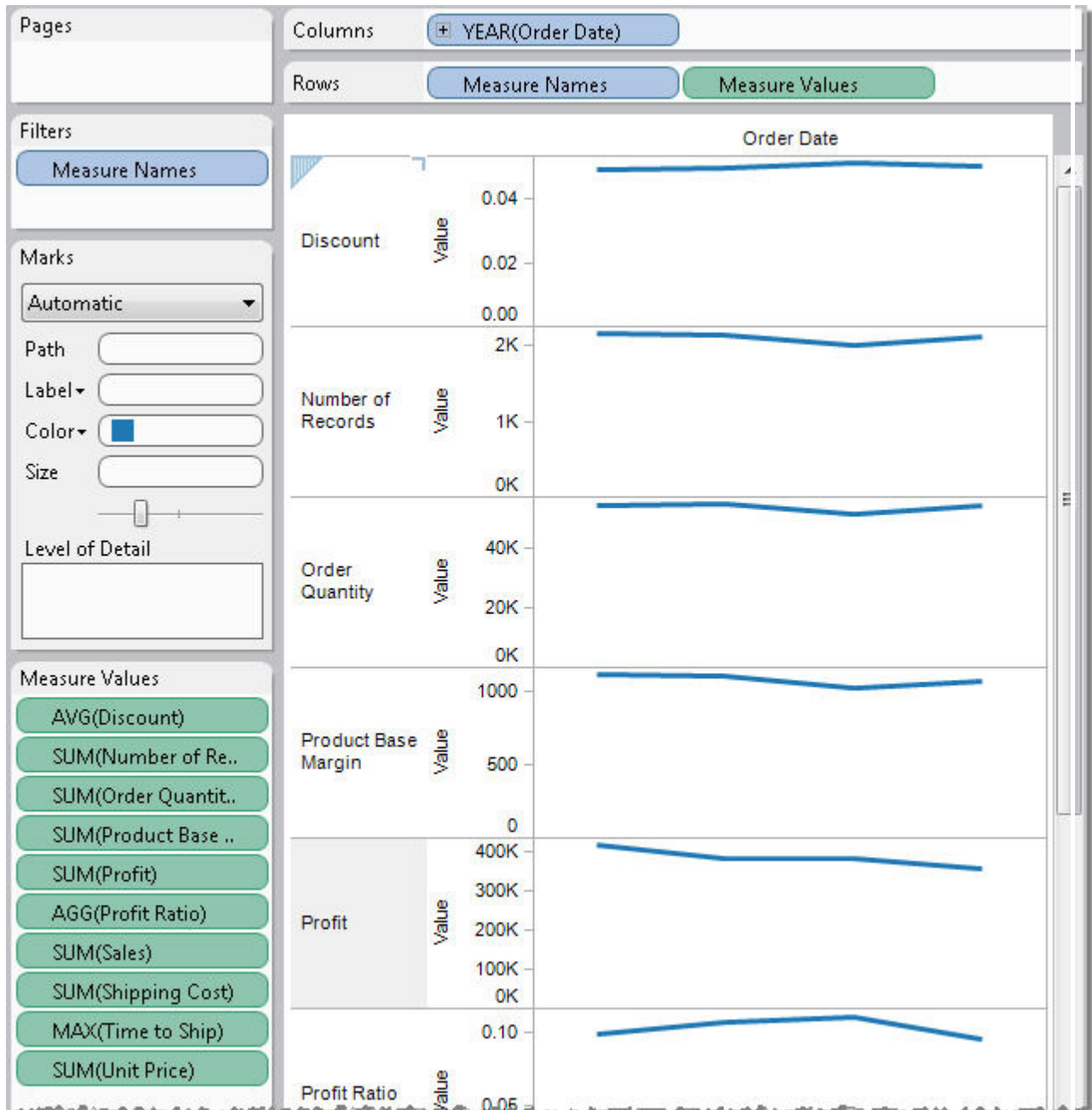
From the **Dimensions** pane, drag **Order Date** to the **Columns** shelf.

Step 3

From the **Dimensions** pane, drag **Measure Names** to the **Rows** shelf.

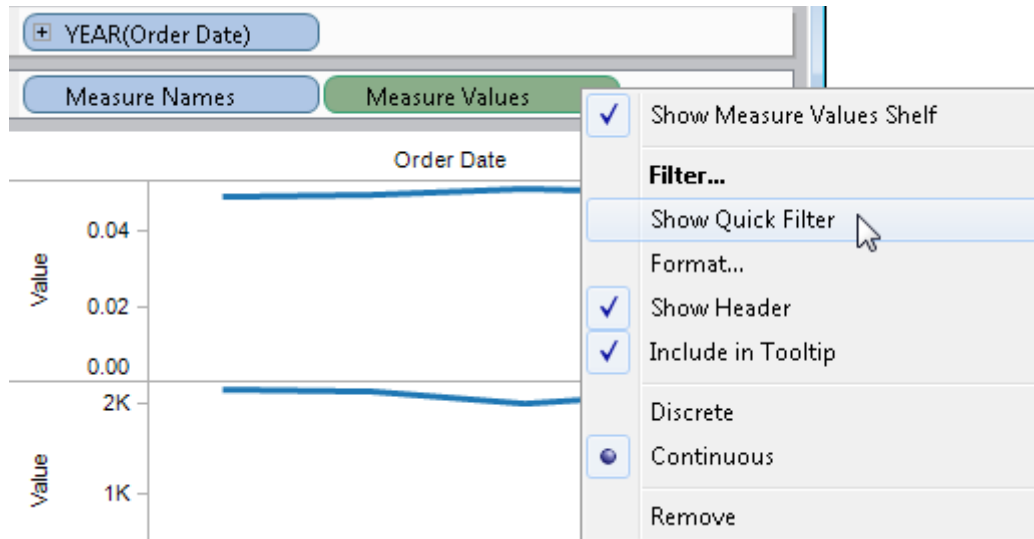
Step 4

From the **Measures** pane, drag **Measure Values** to the **Rows** shelf.



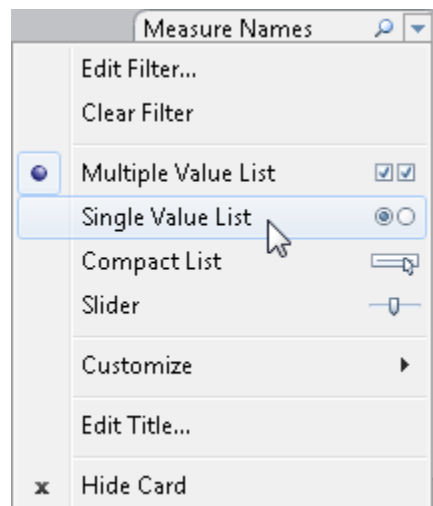
Step 5

On the **Rows** shelf, right-click **Measure Values** and select **Show Quick Filter**.



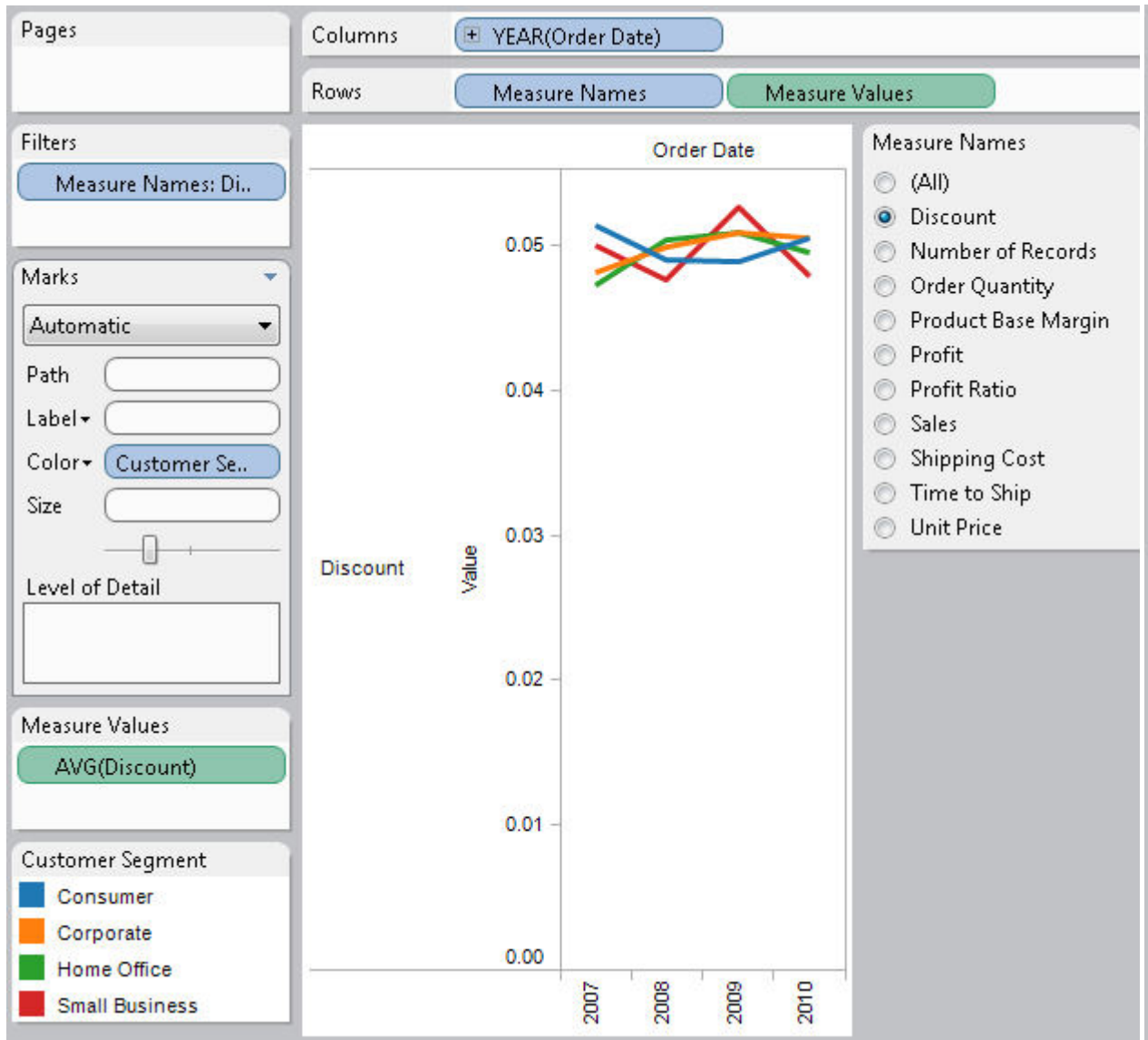
Step 6

On the quick filter, click the menu arrow and select **Single Value List**.



Step 7

From the **Dimensions** pane, drag **Customer Segment** to the **Color** shelf on the **Marks** card.



Use the view in Tableau Server

Step 1

Publish the workbook to Tableau Server.

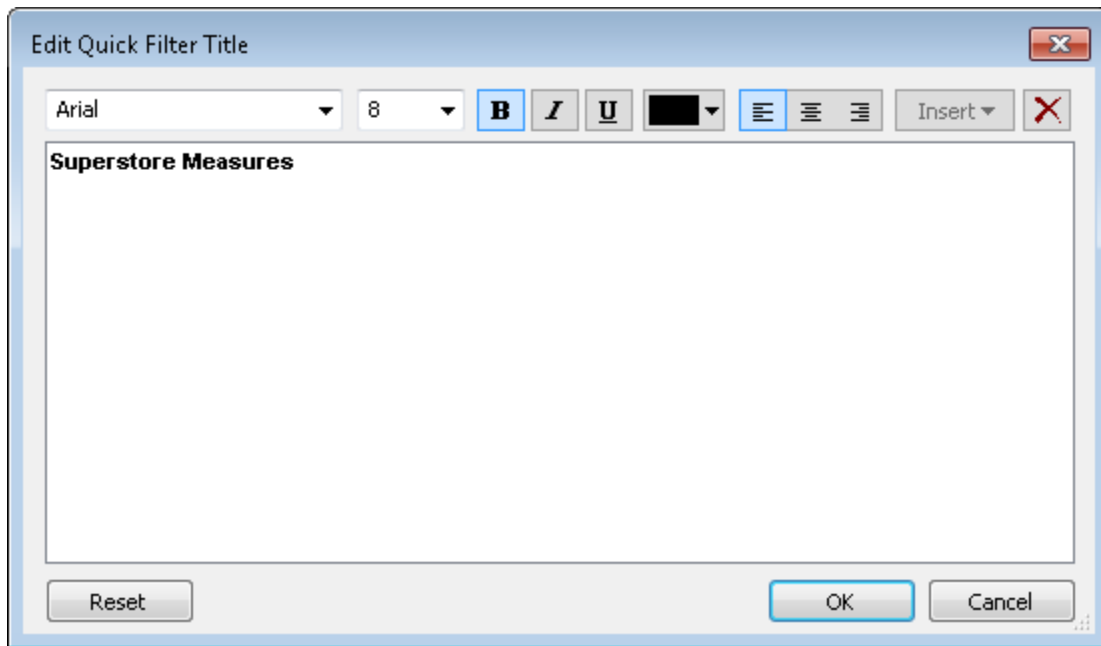
Step 2

Click any value in the **Measure Names** quick filter.

Tableau displays that measure in the view.

Step 3

(Optional) To rename the quick filter, click the menu arrow and select **Edit Title**.



Step 4

(Optional) In the **Edit Quick Filter Title** dialog box, replace **Measure Names** with a new name, and then click **OK**.



Sheet 1

Go: [Back](#) | [Workbook](#)

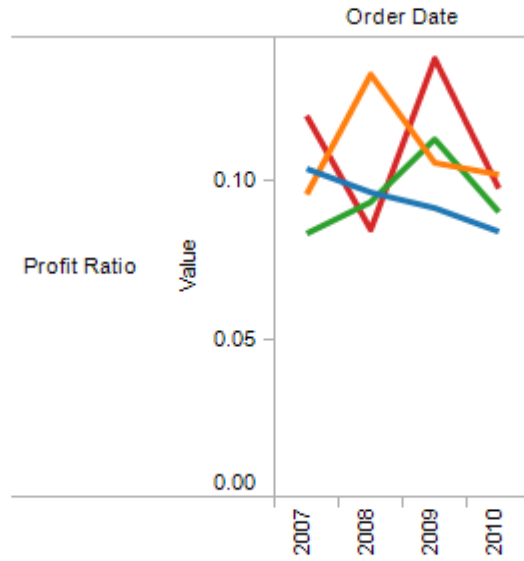
Share →



↓ Download

Customer Segment

- Consumer
- Corporate
- Home Office
- Small Business



Superstore Measures

- (All)
- Discount
- Discount
- Number of Records
- Order Quantity
- Product Base Margin
- Profit
- Profit Ratio
- Sales
- Shipping Cost
- Time to Ship

Comments

No comments for this view yet